

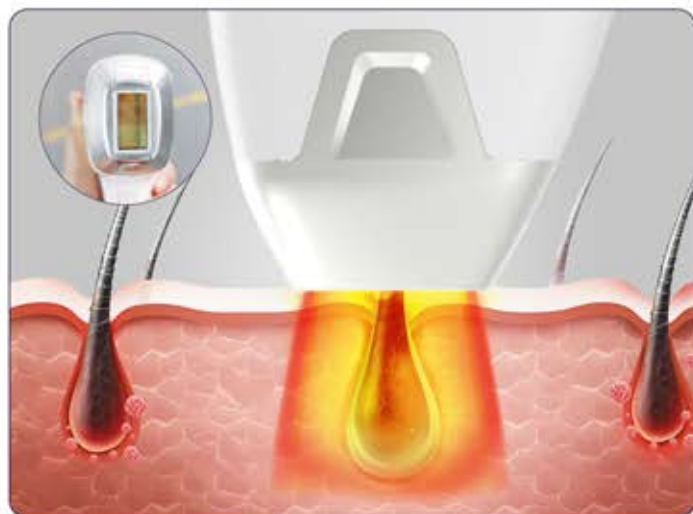
# DIODE LASER HAIR REMOVAL MACHINE

Hair Removal / Skin Lifting / Pore Minimization / Wrinkle Reduction

SK401



## PRINCIPLES OF TREATMENT



Unlike systems only based on laser energy, it is a combination system of 808nm Diode laser and Bipolar RF for safe hair removal treatment in most kind of skin and hair.

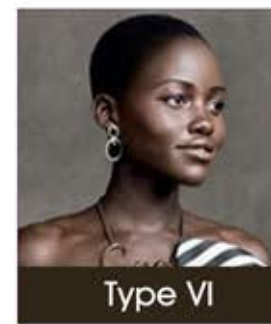
With relatively lower laser energy level to preheat the target, RF surrounds the non-conducting hair follicle to make the target hair to be disabled and denatured.

**Step 1.** Protect epidermis layer against the heat

**Step 2.** Laser heats the hair follicle and acts as a guide of RF

**Step 3.** RF is delivered to the target follicle precisely to be disabled and denatured

755NM, 808NM, 940NM, 1064NM FOR OPTION



TO SERVE PEOPLE WHO LOVE BEAUTY AROUND THE WORLD!

# APPLICATIONS

Hair Removal / Skin Lifting / Pore Minimization / Wrinkle Reduction



Unlimited laser shots



Cooling system hair removal



Imported sapphire crystal



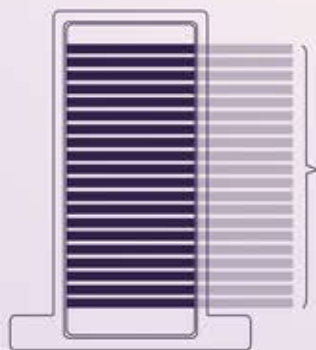
Say goodbye to unwanted hair



DIODE LASER HAIR REMOVAL MACHINE

TO SERVE PEOPLE WHO LOVE BEAUTY AROUND THE WORLD!

755NM  
808NM  
940NM  
1064NM



**20** LASER BARS

## SK401-3000W HAIR REMOVAL

**SK401 VS Traditional**

**250%**

Output power increase

**250%**

The energy remains unchanged,  
and the maximum pulse width decreases

**90** J/cm<sup>2</sup>

Energy density

**20** Hz

Frequency

**90** ms

Pulse width

TO SERVE PEOPLE WHO LOVE BEAUTY AROUND THE WORLD!



## OPERATION INTERFACE

1. Preset smart and expert modes for beginners and experienced.
2. Intelligent navigation menu Skin type, hair color, Hair texture.
3. Customized hair removal services for each of your clients



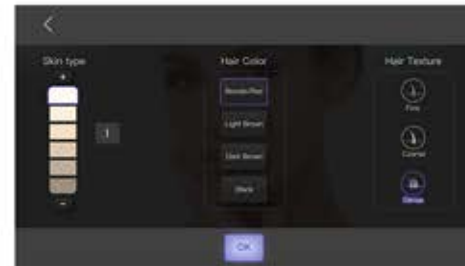
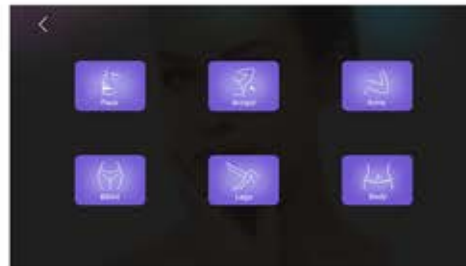
14 inch screen



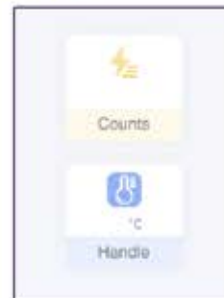
2 inch screen

Users can operate conveniently on the handle without operating from the machine interface.

### Machine interface

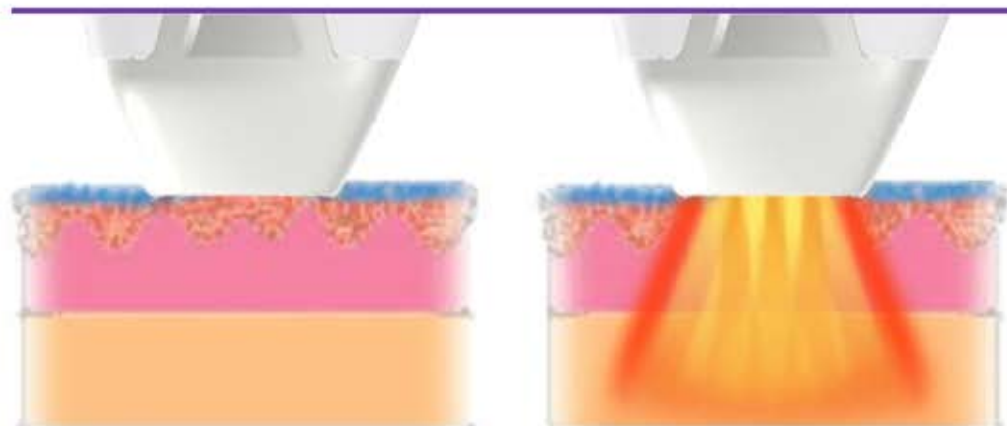


### Machine handle interface



TO SERVE PEOPLE WHO LOVE BEAUTY AROUND THE WORLD!

## COMBINATION OF BIPOLAR RF AND LASER ENERGY



### Use low laser energy

Reduce the occurrence and intensity of side effects.  
Ensure safety for dark skin and suntanned skin.

### Radio frequency

Safer and more comfortable.  
Better for deep hair.  
Light color and fine hair (low melanin content) are better.

### Enhance efficacy

Increase energy, no skin damage.  
Deeper RF treatment depth can increase selectivity and accuracy on target area.  
Target areas with less light energy absorption, such as light colored hair.

TO SERVE PEOPLE WHO LOVE BEAUTY AROUND THE WORLD!

## SUPER COOLING SYSTEM

- Under no-load environment, the handle will freeze within 5 minutes, and the minimum temperature is limited to **-39.3°C**
- Under the recommended parameters, the handle will still freeze and can reach **-10°C** stably
- The handle can stably reach **-2°C** under maximum energy
- No pain during hair removal treatment



- 1200W TEC cooling system
- Let the palladium strip work at 20-25 degrees.
- It can effectively prevent palladium burning caused by too much heat due to too long working time.



DIODE LASER HAIR REMOVAL MACHINE

TO SERVE PEOPLE WHO LOVE BEAUTY AROUND THE WORLD!

# ULTRA-QUIET TREATMENT ENVIRONMENT

- Ultra-quiet treatment environment, no noise

**35dB )))**

DIODE LASER HAIR REMOVAL MACHINE





TO SERVE PEOPLE WHO LOVE BEAUTY AROUND THE WORLD!

## PRODUCT PARAMETERS

Model	SK401
Wavelength	808nm / 755+808+940+1064nm
Display	14 inch touch screen+2 inch handle touch screen
Laser power	3000W
Frequency	1-20HZ
Energy	250J (90J/cm <sup>2</sup> )
Pulse width	AUTO, 30ms, 60ms, 90ms
Illuminance Area	12*23mm <sup>2</sup>
Machine power	5600W
Cooling system	Double 1200W TEC cooler+air cooling
Machine dimensions	43*40*123cm
Weight	58KG
Voltage	220V/110V



DIODE LASER HAIR REMOVAL MACHINE

TO SERVE PEOPLE WHO LOVE BEAUTY AROUND THE WORLD!



Telephone +8610-6021-2335

Mailbox us@globalipl.com

Address Floor 2 and R801, Qunyinghui Bldg., Jinyuan Rd. 32, Daxing Economic Development Zone, Beijing, China 102628